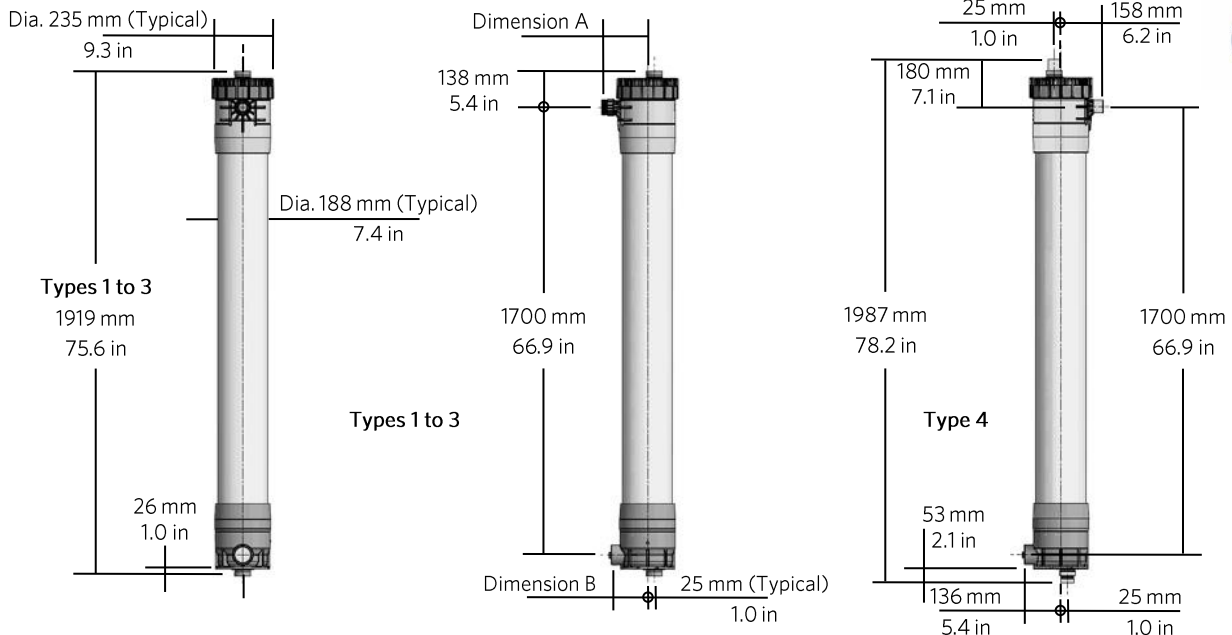


SPECIFICATION SHEET

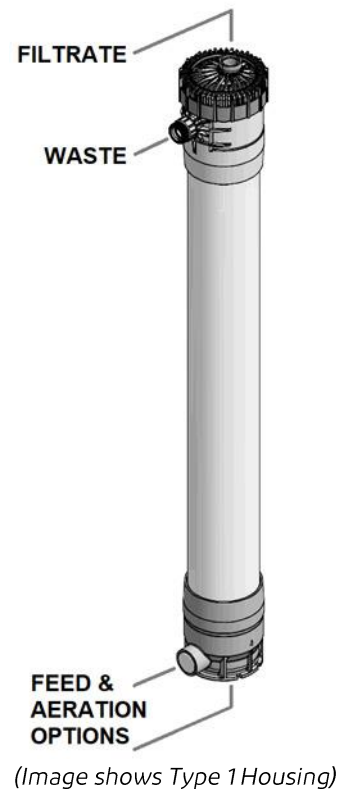
MEMCOR® AM L40 MK2 TYPES 1 TO 4

Aftermarket Module Housings

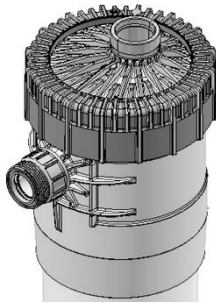


AM L40 MK2 MODULE HOUSING ASSEMBLY DETAILS

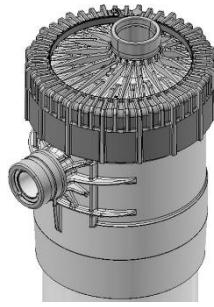
Parameter	Details
Module Operating Process	Pressurized Ultrafiltration
Membrane Module Type	MEMCOR® L40 Hollow Fiber Membrane Filtration Modules (refer to separate specification sheets) ^{Note i}
Filtration Flow Direction	Outside to Inside
Backwash Type	Air Scour with Liquid Backwash
Maximum Operating Pressure	400 kPa ≤ 40 °C / 60 psi ≤ 104 °F
Materials of Construction	Glass Filled Nylon Top Nut and ABS Mouldings, ABS Centre Tube
Other Wetted Module Housing Components	EPDM O-Rings
Nominal Module Housing Length (Overall)	1919 mm / 75.6 in - Types 1, 2 and 3 1987 mm / 78.2 in - Type 4
Nominal Centre Tube Outside Diameter	188 mm / 7.4 in
Potable Water Certification ^{Note ii}	NSF/ANSI 61 Drinking Water System Components - Health Effects
Approximate Module Housing Assembly Mass	33 kg / 73 lb (With MEMCOR® L40 Module fitted)



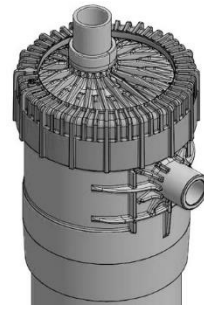
HOUSING CONNECTION ADAPTER OPTIONS



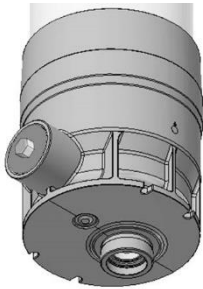
Type 1 Upper Connections



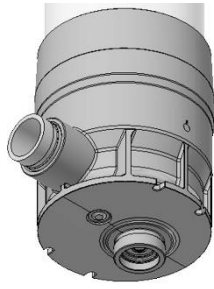
Type 2 and 3 Upper Connections



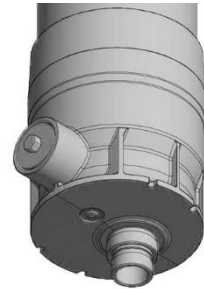
Type 4 Upper Connections



Type 1 and 2 Lower Connections



Type 3 Lower Connections



Type 4 Lower Connections

Standard Housing Assemblies	Filtrate Outlet (Upper)	Waste Outlet (Upper)	Feed Inlet (Lower)	Aeration Inlet (Lower) *	Dimension A	Dimension B
Type 1 (P/N 111097)	Vertical DN50 (2") Grooved Pipe	Horizontal DN40 (1½") Male Thread	Vertical DN50 (2") Grooved Pipe	Typically via Feed Inlet	174 mm 6.9 in	136 mm 5.4 in
Type 2 (P/N 111102)	Vertical DN50 (2") Grooved Pipe	Horizontal DN50 (2") Grooved Pipe	Vertical DN50 (2") Grooved Pipe	Horizontal DN10 (3/8" BSP)	167 mm 6.6 in	136 mm 5.4 in
Type 3 (P/N 111103)	Vertical DN50 (2") Grooved Pipe	Horizontal DN50 (2") Grooved Pipe	Horizontal DN50 (2") Grooved Pipe	Vertical DN10 (3/8" BSP)	167 mm 6.6 in	163 mm 6.4 in
Type 4 (P/N 111104)	Vertical DN40 (1½") Plain Pipe	Horizontal DN40 (1½") Plain Pipe	Vertical DN40 (1½") Grooved Pipe	Horizontal DN10 (3/8" BSP)	158 mm 6.2 in	136 mm 5.4 in

* All housings include a blanked DN50 lower port with a DN10 (3/8") BSPP tapped hole with plug for an aeration air inlet connection.

Notes:

- i. Module Housings should not be exposed to ultraviolet radiation (direct sunlight) and must not be exposed to freezing conditions. When membrane filtration modules are fitted the transport, storage and operating limits of the membranes determine allowable limits of exposure. Please refer to Module specification sheets for further details.
- ii. NSF refers to NSF International formerly known as the National Sanitation Foundation. ANSI is a trademark of the American National Standards Institute.
- iii. DN50 (2") Grooved Pipe has nominal OD 60.3 mm/2 3/8 in. DN40 (1½") Grooved Pipe and Plain Pipe connections have nominal OD 48.3 mm/1 7/8 in. Type 1 DN40 (1½") Male Thread Union Adapter on Waste Outlet has proprietary ISO Metric Fine 58 x 3 mm thread.